



MOUNTAIN PARK
HEALTH CENTER

HEALTHCARE YOU CAN SEE

2015 YEAR IN REVIEW

Joaquina, A Patient's Story

"Thank you Mountain Park for allowing this mother to continue to be with her children."

In 2013 Joaquina's health took an unexpected turn. She was a healthy wife and mom of two when a breast cancer diagnosis changed her life. As fast as the news became her reality, the assistance, support and guidance from the Mountain Park providers and staff quickly followed. Watch her story here.



Meet Joaquina:

Click here to watch video

*To hear more of our patient and staff stories,
visit mountainparkhealth.org/stories*



Dear Supporters and Friends,

Our goal at **Mountain Park** is to create clinics that are **living places** which visually represent what health looks like to **our communities**. A playground for children to run, jump, and play; walkways wide enough for strollers and families to walk together; and **comfortable spaces** to wait for a ride and see a doctor. Our **clinics** are open, airy, welcoming, accessible and **easy to navigate**. From the inside out they are expressions of health.

Without **compassion**, caring and accessibility, **healthcare** is intimidating and unapproachable. For Mountain Park to meet the needs of our communities, we need to be beacons of health to our neighbors; providing healthcare in a convenient location when patients need it.

Medicine must also evolve to meet the needs of our communities. In 2015 we partnered with **The Legacy Foundation** to open clinics inside the Christown Legacy YMCA, the Marc T. Atkinson Middle School in the Cartwright School District and Sunrise Elementary School in the Deer Valley School District. Through the **partnerships**, we are able to provide pediatricians within these **community** centers and schools to better reach **families**. This is a testimony to our focus to provide convenient, accessible healthcare to our communities.

Taking care of **70,000 patients** is a tremendous task. The best way to do it is by ensuring our staff is at their best. That's why we've expanded our **Wellness** Program in order to help **our team** live a healthier lifestyle through healthy eating and exercise. We partnered with one of our patients to bring a **farmers market** to our clinics. Now, both staff and patients have easy access to fresh fruits and vegetables.

There are a few things as important as health. Enjoy this report and our examples of health you can see.

In Good Health,

John Swagert M.D.

John Swagert, M.D.
CEO, Mountain Park Health Center



Health in all Communities

Looking for a Mountain Park Health Center?
There's one near you!



GATEWAY



TEMPE



GOODYEAR



MARYVALE



BASELINE



**SUNRISE
ELEMENTARY SCHOOL**



CHRISTOWN YMCA



**MARC T. ATKINSON
MIDDLE SCHOOL**

Baseline

635 E. Baseline Rd.
Phoenix, Arizona 85042
Mon-Fri: 7:30 a.m. – 8:00 p.m.
Sat: 7:30 a.m. - 4:30 p.m.

Gateway

3830 E. Van Buren St.
Phoenix, Arizona 85008
Mon: 8:00 a.m. – 5:00 p.m.
Tue: 8:00 a.m. – 8:00 p.m.
Wed - Fri: 8:00 a.m. – 5:00 p.m.

Goodyear

140 N. Litchfield Rd. Suite #200
Goodyear, Arizona 85338
Mon, Tue, Wed, Fri: 8:00 a.m. – 5:00 p.m.
Thu: 8:00 a.m. – 8:00 p.m.

Maryvale

6601 W. Thomas Rd.
Phoenix, Arizona 85033
Mon-Fri: 8:00 a.m. – 8:00 p.m.
Sat: 7:30 a.m. – 4:30 p.m.

Tempe

1492 S. Mill Ave. Suite #312
Tempe, Arizona 85281
Mon: 8:00 a.m. – 8:00 p.m.
Tue-Fri: 8:00 a.m. – 5:00 p.m.

Our New Pediatric Clinics

Christown YMCA

5517 N. 17th Ave.
Phoenix, Arizona 85015
Mon: 8:00 a.m. – 8:00 p.m.
Tue-Fri: 8:00 a.m. – 5:00 p.m.

Marc T. Atkinson Middle School

4222 N. 51st Ave.
Phoenix, Arizona 85031
Mon-Fri: 7:30 a.m. – 4:30 p.m.

Sunrise Elementary School

17624 N. 31st Ave.
Phoenix, Arizona 85053
Mon-Fri: 7:30 a.m. – 4:30 p.m.

Voices of Health

Why our patients love Mountain Park



Meet Hawa and her Family:

Hawa is able to communicate her and her children's needs thanks to our translation services, including Customer Service Representatives who come directly from her community.



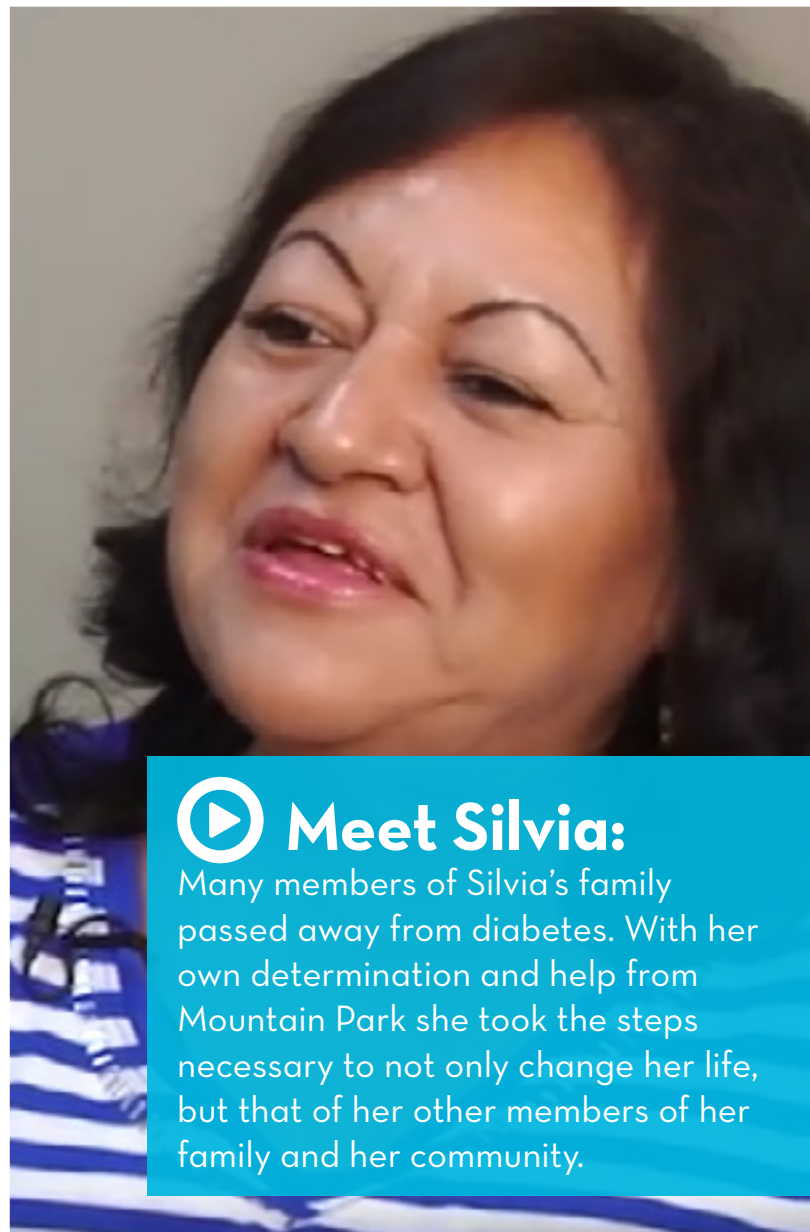
Work with purpose:

Our staff shares why they love working at Mountain Park, a nonprofit community health center that truly cares about the communities we serve.




Meet Alberto:

A former pediatric patient who volunteers to read to patients during the summer, Alberto shares how Mountain Park's Dr. Elizabeth Perez inspired him to become a doctor.



Meet Silvia:

Many members of Silvia's family passed away from diabetes. With her own determination and help from Mountain Park she took the steps necessary to not only change her life, but that of her other members of her family and her community.



“By giving this Baby Box to every expectant mother at Mountain Park, our goal is to provide the estimated 2,000 babies we’ll deliver this year a safe place to sleep, and their moms with supplies and services to help give these babies a healthy and safe start in life.”

*~Dr. Swagert,
CEO, Mountain Park Health Center*



Health from the Very Start

In December, Mountain Park kicked off its much anticipated Baby Box project. Modeled after the [70-year Finnish tradition](#), the Baby Box is used as a comfortable, safe place for babies to sleep and is filled with safe, cute and practical products for [baby and mother](#) to use. The box includes clothing, blankets, a health kit and other newborn necessities, and when empty, the box itself has a covered mattress intended to serve as the [baby's first bed](#) to keep the baby safe.

[Our Baby Box](#) project is the largest initiative of its kind in the United States. The Baby Box is credited with helping Finland achieve one of the world's [lowest infant mortality](#) rates and the tradition is designed to give all children in Finland, no matter what background they're from, an equal start in life.

Growing for Health

As a part of Mountain Park Health Center's ongoing commitment to the community, we were excited to open the doors to our newest clinic on January 20, 2015.

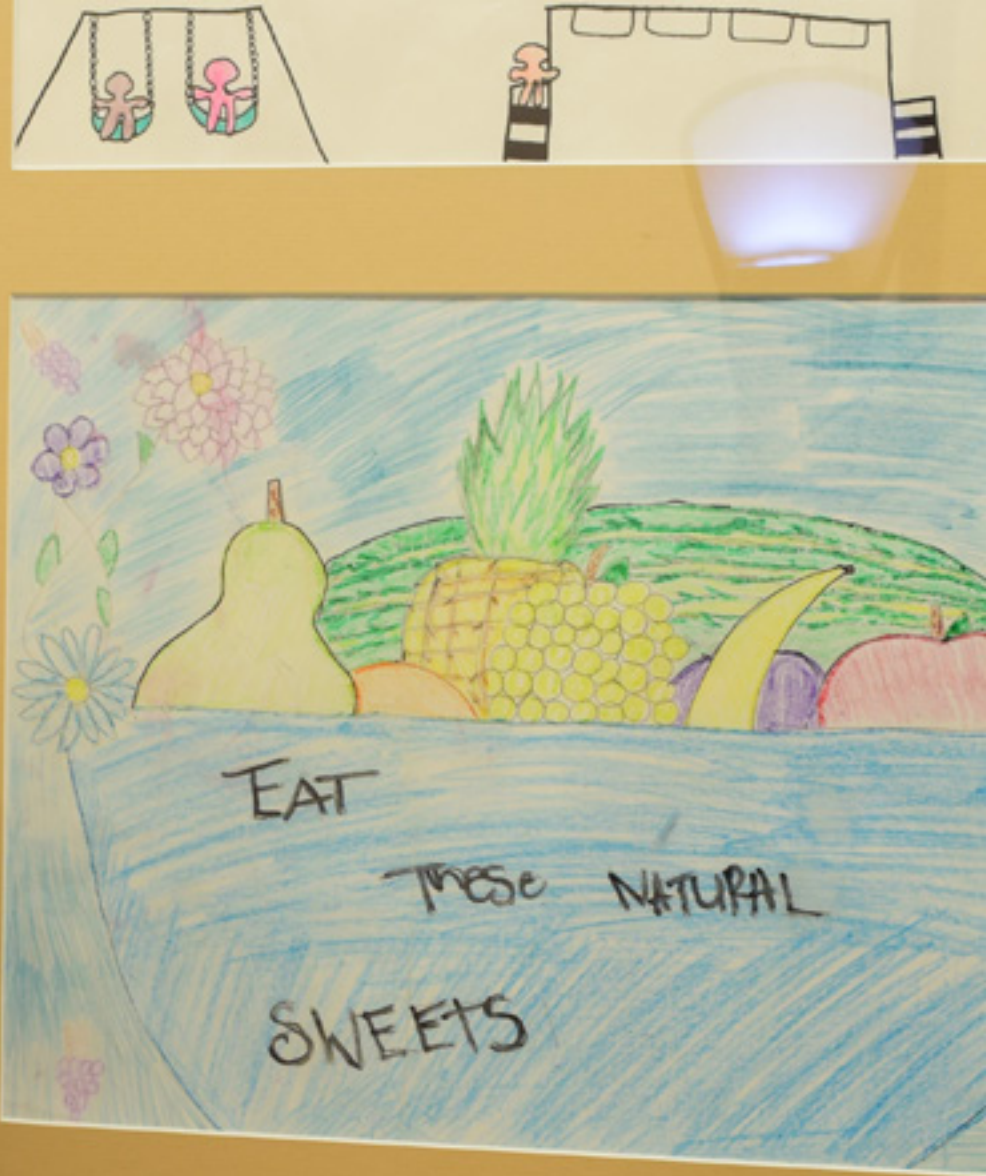
Community feedback inspired the vibrant outdoor playground which helps children enjoy coming to see their doctor. Families can wait comfortably in our waiting area that is designed to feel more like home than a medical center. The colorful full-service clinic is complete with the artwork of local students from Brunson Lee Elementary School.





 **See Our
Grand Opening:**

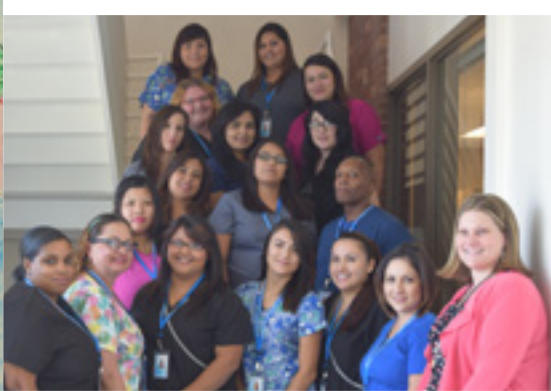
Mountain Park's CEO Dr. John Swagert, Gateway Clinic staff and patients cut the ribbon together commemorating the opening of our newest clinic.



Health Through Art

Our *Art in Schools* program encourages students (many who are patients of Mountain Park) to produce thoughtful, one of a kind, health and wellness themed artwork, and have their work displayed at our clinics.


This year we partnered with Brunson Lee Elementary School at our Gateway Clinic and Andalucia Middle School and James W. Rice Primary School at our Maryvale Clinic.



Health Through Innovation

We aren't just **innovative** in our clinics and surrounding communities, we also use inventive methods to attract the **best staff** to our team. Mountain Park's **Medical Assistant Bootcamp** program launched in March 2015 with the goal of teaching new staff the Mountain Park way, and has proven to be extremely successful. The intensive three-week training **experience** provides a great foundation for new staff and prepares them to best serve our patients. Since its inception, almost **100 Medical Assistants** have graduated and gone on to work in our clinics. "The program was really great," Jazmin Carmona, Gateway Clinic MA said. "I **learned** how Mountain Park works and how we should care for patients."



 **Work at Mountain Park:**
A great team could start with you. Be a part of the difference. Hear from our employees why working at Mountain Park is so rewarding.



Health Through Nutrition

As part of our wellness program initiatives, Mountain Park has established a "Farm to You Partnership" with Orchard Community Learning Center, Fresh Express and the International Rescue Committee's (IRC) New Roots Program. The Orchard, Fresh Express and IRC, along with other local farmers, support our efforts to provide fresh, naturally grown produce for Mountain Park employees, patients and the communities we serve. Many of our local farmers are also Mountain Park patients!

The Mountain Park Farmers Markets are open to everyone and are located just outside the front doors of our clinics.

Gila Farm

lettuce \$2
green kale \$2
collard greens \$2
parsley \$1
chard \$2
green onions \$2
okra \$2
green beans \$2
lg squash 3 \$1.50
zucchini's
Sm. Squash 3 \$1.00
zucchini's
cucumbers 2 for \$1.00
Alhanka cucumbers \$1.00
tomatoes \$4
chilis \$2
banana peppers \$2

At Mountain Park, we know there are superheroes all around us – they are our dedicated team of healthcare providers.



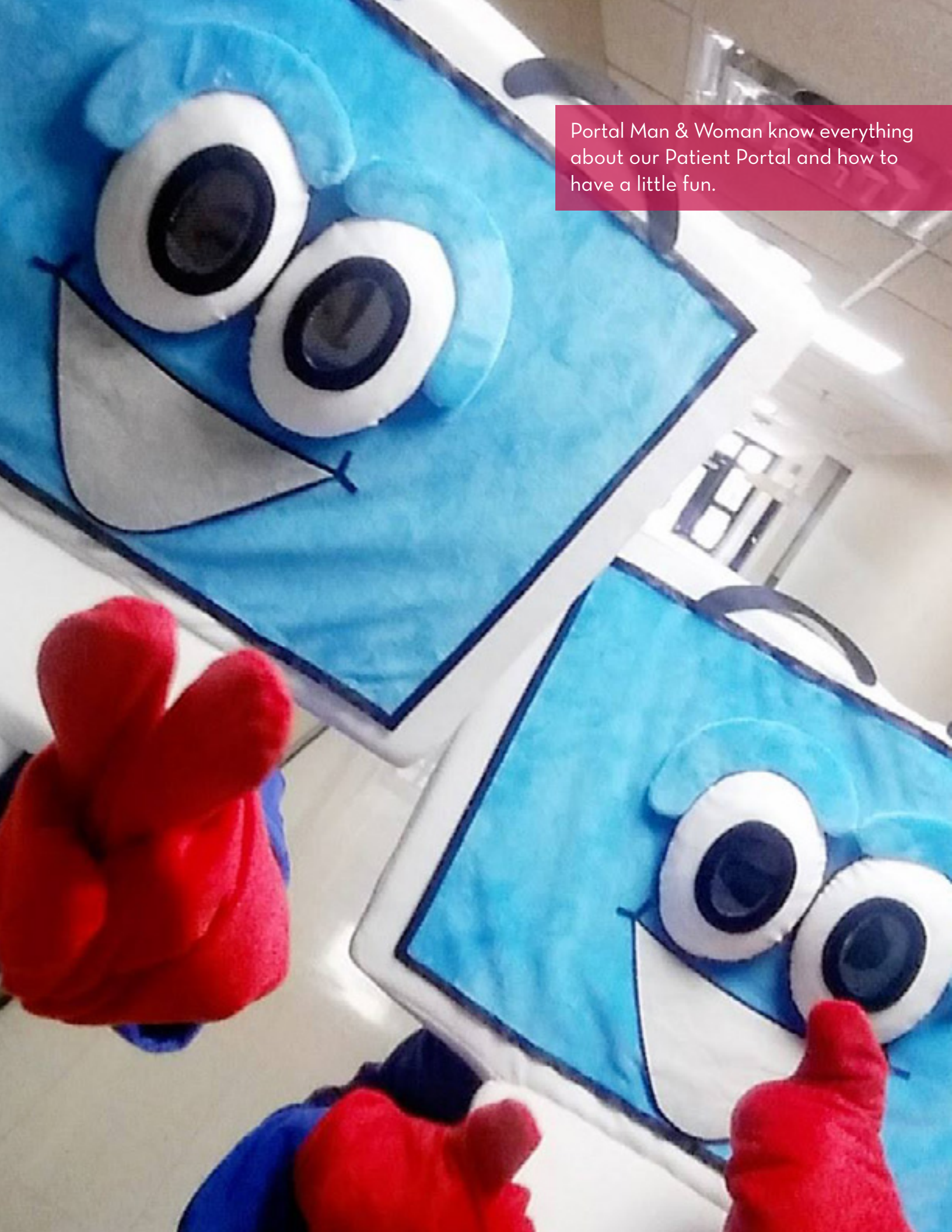
Health Through Education

This summer [Dr. Gabe Martinez](#), a Mountain Park pediatrician at our Maryvale Clinic, donned his doctor's coat and talked with kids at the Goodyear Library about the work he does every day. Then he revealed his secret [superhero](#) T-shirt, and explained how [healthcare](#) providers are superheroes for families all around us. The [children](#) made health-themed crafts and [learned](#) that going to the doctor isn't scary at all!



Our [commitment](#) to providing services where they are needed most could not be more evident. Through a partnership with [The Legacy Foundation](#), we now serve pediatric patients at the Christown YMCA, Marc T. Atkinson Middle School and Sunrise Elementary School.

Portal Man & Woman know everything about our Patient Portal and how to have a little fun.



Health Through Technology

This year Mountain Park developed and launched a fresh [new website](#). Staff and [community](#) partners provided feedback to help design a website with three basic but important elements in mind:

- 1** [Make it easy](#) for our patients to find what they need, including location information and profiles of all our care team members.
- 2** Tell the [story](#) of Mountain Park through pictures, [videos](#) and testimonials.
- 3** Attract great people and organizations to work at and partner with Mountain Park.

We also [expanded](#) our ability for patients and providers to [communicate](#) electronically by adding new features to our [Patient Portal](#).



IN 2015
MOUNTAIN PARK
PROVIDED:



69,068
Individual
Patients Care



1,750
Baby Deliveries



2,821
Mammograms



17,629
Flu Shots



26,890
Dietician Consults



5,166
Dental Fillings





Thank you to our donors!

We couldn't provide the care we do without your generous support.

\$1 - 250

Alicia Alvarez
Celia Acosta
Eduardo Acosta
Israel Aldama
Valeria Alvarez
Rosa A. Alvarez
Brittany Andrus
Bianca Angulo
Alice Antonescu
John Bambulas
Kevin and Karen Blakley
Monica Bobadilla
Elizabeth Bromley
William Bruno
Karintha Buice
Melanie Burm
Cassidy Campana
Maria Campos
Maria Carrasco
Bertha Carrillo
Luz Castro
Katherine K. Cecala
Dennis Cesen
Keith Chandler
Inez Chavarria
Lynn Cipriani
Stephanie Conner
Christina Daniels
Tatiana Daughtrey
Hon. Hercules Alexander Dellas
Svetlana Drobysch
Nerek Betsabe Duarte
Lacey Duffin
Wilson Ejim
Olga Enriquez
Magali España
William Michael Estoup
Maria Estrada
Rich Frazier
Janice Freeman
Maria Galindo
Adriana Garcia
Nancy Garcia
Christine Garcia
GoodThoughts, Inc.
Sarah Grant
Anthony Groseta
Carmen Guevara
Esperanza Gutierrez
Leticia Gutierrez
Nancy A. Hagener
Kristina Hallberg
Jenny Hernandez
Valentina Hernandez

Priscila Hernandez
Rene Herrera
Nikki Hicks
Juanita A. Howard
Gladys Huerta
Rhonda Huffman
Nadeem Husain
Lydia Infante
Matthew Jewett
Kate Kealy
Jennifer Kennedy
Rachel Kimani
Ann Kinzig
Claudia Kirch
Steve Kittridge
Chris Knorr
Mary Jo Lancaster
Char Lee
Brian Lien
Margarita Lopez
Alma Lopez
Linda Lopez
Ana Lopez
Rosemary Luna
Carlos and Yvette Luna
Sally Mahoney
Mariana Martinez
Rosa Martinez
Camellia McClendon
Sen. Debbie McCune Davis
Rachel Molina
Gregorio Montes de Oca
Laura Moraga
Shawn Moran
Angelic Morton
Mandy Neblett, NP
Khanh Nguyen, PharmD and
Nikki Khraizat
Amy Nunez
Lizbeth Ochoa
Maria Olivares
Vianey Olivarría
Kasey Opel
Yessenia Ortiz
Melanie Ortiz
Courtney Parks
Mayra Perez
Natividad "Nati" Perez
Kim Perry
Kadi Christine Peterson
Donna Porter
Alexandra Redman
Elizabeth Reyes
Veronica Rivas
Raquel Rivera

Judy Robertson
Emily Rodriguez
Yaneisis Rodriguez
Roger Grancorvitz
Eva Roque
Krista Roy
Maria Ruiz-Luna
Charles and
Katherine Sahnas, NP
Kaleigh Schwalbe
Brandy Segura
Jarret Sharp
Richard Siever, Esq.
Davinder Singh, M.D.
Monique Soto
Steven Starks
Marki Stewart
Sarah-Michelle Tayler
Toby Urvater
Briana Valdez
Jennifer Varela
Lynda Vaterlaus, PsyD
Maria Vega
Christopher Velasco
Andrew Vogoney
Alyssa Ward
Susan L. Watchman, Esq.
Arnim Wiek
Jo Ann Woodward, NP
Sherrye Zimmerman

\$251-500

Christine Abell
Paul Alessio
Evita Bateman
Myron and Marcene Brower
Misty Crawford, NP
Eugene Elliott
Fester & Chapman P.C.
Troy Foster, Esq.
Liliana Garcia
Linda Golmer
Elizabeth Gonzalez
Robert S. Gorman, M.D.
Leticia Graham
Jessica Guzman
Christopher and Joanna Hewett
Bart Hohimer
Carl and Alana Podwika
Keith Kintigh
Stanley Kudish, PharmD
Rachel and RJ Lambert
Genoveva Ledezma
Sharon Levey
Dr. Keith Lindor

Tony Ludden
Jed Maddela, M.D.
Jonathan Manwaring, M.D.
Tim and Norma Martens
Roseanna Martinez
Steve and Elizabeth McNamee
Robert and Janey Pearl Starks
Rachel Prell, NP
Magnolia Reyes
William Rosenfeld M.C., L.P.C.
SmithGroup JJR
Kelly Sommers
St. Luke's Health Initiatives
Manuel Tarango
TIAA-CREF
Varsity Contractors
W. R. Van Arsdell, M.D. and
Carmen Arocho-Vera, M.D.
George and Stella Xenakis

\$501-2,500

AAS Holdings
Aetna, Inc.
James Baik, DMD
Cancer Treatment
Centers of America
Janna C. Castro
Anielka Contreras
Cosmopolitan Medical
Communications
Maritza Fuentes
Chris and Michelle Hernandez
John Swagert, M.D. and
Karen Kolbe
William Kirkland
Deborah Loving
Jothi Nadarajah, DDS
Essen and Allison Otu
Linda and Chuck Redman
Veronica Rendon
Sonora Quest Laboratories
Source Aim, LLC
Duncan Tang, M.D.
The RoomStore

\$2,501-10,000

Executive Council Charities
Financial Health Strategies, Inc.
Kathryn W. Kolbe and
William Rapp
William Leinheiser
Lovitt and Touche, Inc.

+ \$10,000+

Fry's Food Stores



LINDA HUFF REDMAN
CHAIR
COMMUNITY MEMBER



RICHARD SIEVER, ESQ.
VICE CHAIR
PHOENIX CHILDREN'S HOSPITAL



JARRET SHARP
TREASURER
SALT RIVER PIMA-MARICOPA
INDIAN COMMUNITY

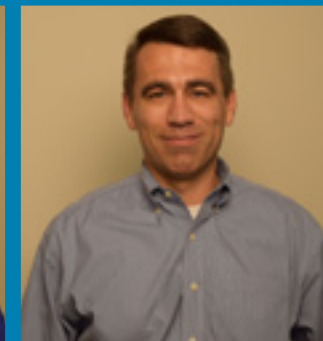
Board of Directors



MOHAMED ADEN
SOMALI AMERICAN
UNITED COUNCIL



ANIELKA CONTRERAS
ASU COLLEGE OF
HEALTH SOLUTIONS



KEVIN CAMBERG, CPA
FESTER &
CHAPMAN, P.C.



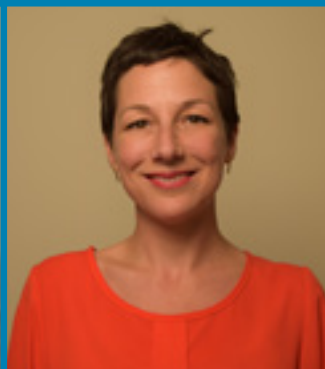
KALEIGH SCHWALBE
WALTON SUSTAINABILITY
SOLUTIONS ASU



**REV. ARNOLD
JACKSON**
COMMUNITY MEMBER



KRISTIN GUBSER
GATEWAY COMMUNITY
COLLEGE



LORI ROBINSON
BALSZ ELEMENTARY
SCHOOL DISTRICT



RITA KHALAF
COMMUNITY
MEMBER



SCOTT GORMAN, M.D.
COMMUNITY
MEMBER



ZEENAT HASAN
HEALTH THROUGH
ACTION AZ

2015 Fiscal Health

Current Assets as of 11/30/2014

Cash	10,343,317
Accounts Receivable	14,234,002
Grants and Pledges Receivable	1,325,109
Inventory and Prepaid Expenses	275,279

Current Assets **26,177,707**

Long-term Assets

Land, Buildings, Improvements	17,257,397
Furniture, Equipment, Other	3,918,179
Construction in progress	9,538,843
Accumulated Depreciation	(9,331,335)
Net Property and Equipment	21,383,084
Other long-term assets	2,427,013
Total long-term assets	23,810,097

Total Assets **49,987,804**

Current Liabilities

Accounts Payable and Accrued Liabilities	4,062,637
Refundable Advances	61,762
Current Maturities of Long-term Debt	236,600
Total Current Liabilities	4,360,999
Long-term Debt	14,306,600
Net Assets	30,861,338

Total Liabilities and Net Assets **49,987,804**

Revenue 2014

Patient & Pharmacy Revenue	40,640,596
Federal Grants	7,212,707
State & Local Grants	4,536,724
EHR Incentive Program	119,000
Contributions / Other	835,940
In-Kind Donations	2,253,255

Total Revenue **55,598,222**

Expenses

Salaries and Benefits	30,445,549
Supplies	2,903,345
Other (Contractual, Depreciation, In-Kind, etc.)	15,535,771

Total Expenses **48,884,665**

Change in Net Assets **6,716,238**

Net Assets Beginning of Year **24,145,100**

Net Assets Year End **30,861,338**



Mountain Park's Love Your Block Canal Clean-Up kicked off from our Gateway Clinic.



Our very own Language Access Manager, Rabah Radhi, and her daughter volunteering at the cleanup.



Hundreds of volunteers helped paint a mural behind our clinic and cleaned up the area around the canal.



A few members of Mountain Park's best band! Senior Grants Director, Stella Xenakis; Senior Director of Clinical Informatics and Pharmacy, Alana Podwika; Senior Director of Diversity and Community Affairs, Essen Otu, Medical Director, Dr. Davinder Singh; Senior Director of Marketing and Engagement, Michelle Hernandez; Chief Financial Officer, Chris Hewett, and Mountain Park CEO, Dr. John Swagert.



Our Board Member, Jarrett Sharp, and his wife having fun at our event!

Music For Medicine

A night where Mountain Park staff join community members and supporters for music, food and to learn about the great work we do at Mountain Park!



Change on Three playing some smooth jazz.



Diversity and Community Affairs Coordinator Krista Roy with Samer Hassan from IRC and fellow friend rocking out at the event.

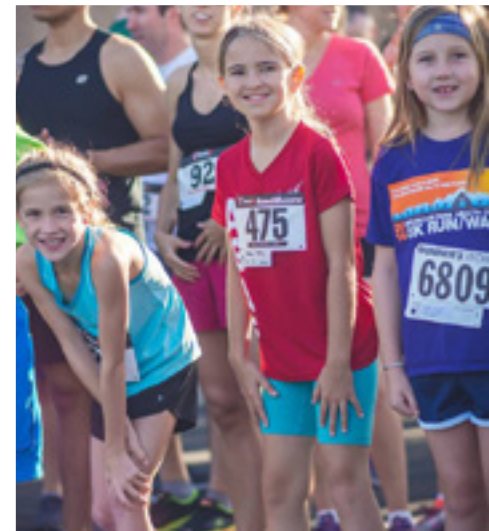


Cancer Program Manager, Raquel Acosta, East Valley Director of Operations, Claudia Kirch, and Operations Director of Baseline Pediatrics, Roseanna Martinez, making their own music at the event!



Health Through Activity

Patients, staff, community members and their families joined us for our 5th Annual 5k Run/Walk hosted at our Goodyear Clinic. We also co-hosted a "Bike Rodeo" safety event with City of Phoenix Councilwoman Kate Gallego.





#LOVE

Keep
PHOENIX
Beautiful



Health Through Community

This year Mountain Park launched our [Community Ambassadors](#) Program which works to support and engage the communities we serve through volunteerism.

In November Mountain Park [hosted](#) the Love Your Block - Grand Canal Clean-Up at our Gateway Clinic. Mountain Park's Community Ambassadors led the [event](#), along with nearly [200 volunteers](#), to beautify and revitalize the canal behind our Gateway Clinic.

There was a tremendous amount of support from city officials, including City of Phoenix [Mayor](#) Greg Stanton and [Councilwoman](#) Kate Gallego, local businesses, non-profits and residents from our Gateway neighborhood. [The Grand Canal](#) is an asset to our community and [Mountain Park](#) is proud to be part of the Canalscape project. Next fall, the goal is to add lighting, paved walkways and art installations along the canal.

In the fall Mountain Park staff was invited to join [House Leader](#) Nancy Pelosi, Arizona [Congressman](#) Ruben Gallego and [Councilwoman](#) Kate Gallego in announcing the [\\$10.3 million Tiger Grant](#) award making these efforts possible.



 **Meet Julius:**

An independent man appreciated the way we listened to him when discussing his health. Now he's in control of his diabetes.



Health Through Partnerships

This year our [Sangre Por Salud](#) (SPS, blood for health) [Biobank](#) partnership with Mayo Clinic and Arizona State University celebrated the participation of our 1,500th patient. This partnership's [mission](#) is to address health inequities in the Latino community. The partnership is guided by a 14-member Community Advisory Board who advise on ethical, legal, policy and social issues of using DNA [research](#). The voluntary group is comprised of Mountain Park patients, SPS Biobank participants, and community members who are all [committed](#) to seeing new treatments develop or improve patient care at Mountain Park.



Watch Julius, a dedicated Community Advisory Board [member](#) talk about how Mountain Park [helped](#) him manage his diabetes.



MOUNTAIN PARK
HEALTH CENTER

CORPORATE OFFICE
2702 North 3rd Street, #4020
Phoenix, Arizona 85004
(602) 323-3344
INFO@MPHC-AZ.ORG

MOUNTAINPARKHEALTH.ORG